

## Comfortable

- No goeey mess associated with impression materials
- Breathe and swallow naturally during the digital 3D scan
- No unpleasant taste

## Safe

- Does not expose you to radiation
- Uses a laser to generate the images

## Accurate

- Precise fit of crowns, bridges, veneers, and Invisalign®
- Eliminates the need to retake impressions multiple times

## Fast

- View 3D scans onscreen with your dentist immediately
- Digital impressions taken for restorative purposes are complete in approximately 3 to 5 minutes



# Making A Great First Impression— Without The Goop Or Gag!



## Let's face it—

it's not easy to stop your gag reflex when getting a goop-filled dental impression made!



Thankfully, old-school impressions are no longer the only option. With **state-of-the-art technology** and the progressive dentist office that's providing your treatment, making a great—and comfortable—first impression with the iTero® scanner has never been easier.

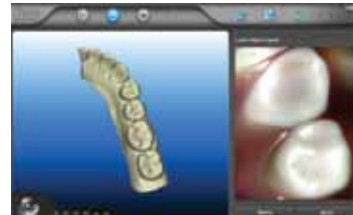
The iTero scanner allows your dentist to take a digital impression—a **highly accurate, digital 3D image** of the individual characteristics of your tooth surfaces and gum tissue. The iTero scanner is all about keeping you comfortable while delivering precise imagery, without the putty-filled impression tray that makes you gag!

Not only is it more comfortable, but taking a digital scan for your new crown, bridge, or Invisalign® aligners is quick, which allows you to spend less time at the dentist's office and more time enjoying your new smile!



### The Wand

Your dentist uses the iTero to capture images of your tooth surfaces and gum tissue



### The Scan

You and your dentist can follow the scanning progress on the computer screen



### The 3D Model

The completed scan is sent to the computer, which builds a 3D model of your tooth surfaces and gum tissue



iTero®